

1 POLISHING

2 FINISHING

3 PROTECTION

SUPERFINISHER 2

NANO PERFORMANCE POLISH



PRODUCT DESCRIPTION

Nano-abrasives based finishing formula with high performance polishing agents. It easily removes light dullness, swirls, polishing marks, holograms and sand scratches up to P4000-P5000, assuring an amazing deep gloss finishing.

PHYSICAL PROPERTIES

Colour: Light blue
Physical form: Creamy
Odour: Light and pleasant
Density: 0,970 g/ml
Flammability: Not flammable
Type of surface: Car bodywork

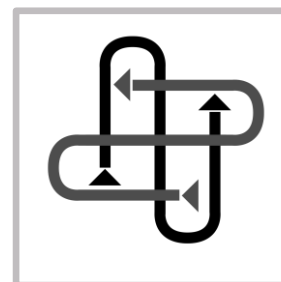
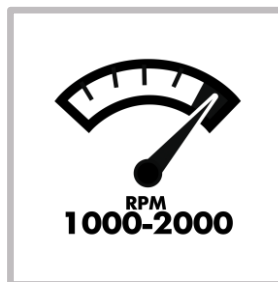
HOW TO USE

Please apply a small quantity of compound on a medium-soft light blue foam pad. Let the polisher turn at low revolutions, speeding them up (1000-2000 RPM) while spreading the paste with crossed movements. Pay attention at not overheating the paint. If necessary, please repeat the application more times till the complete removal of scratches. Eventually, wipe the surface with a clean Silky Microfiber towel.

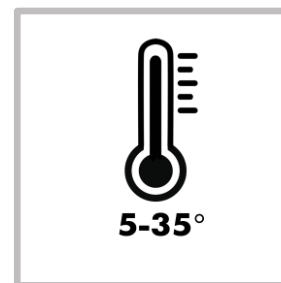
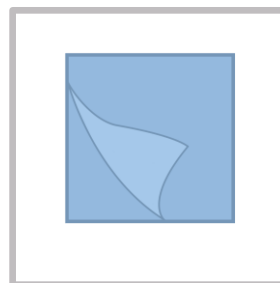
PRODUCT INFORMATION

Package	Code	Pcs/Box
0,5 kg	600211	20
1 kg	600223	12
5 Kg	600203	2
Package	Black Code	Pcs/Box
0,5 kg	600212	20
1 kg	600224	12
5 kg	600202	2

INSTRUCTIONS FOR USE



RECOMMENDATIONS



FOLLOWING STEPS

3 PROTECTION

